



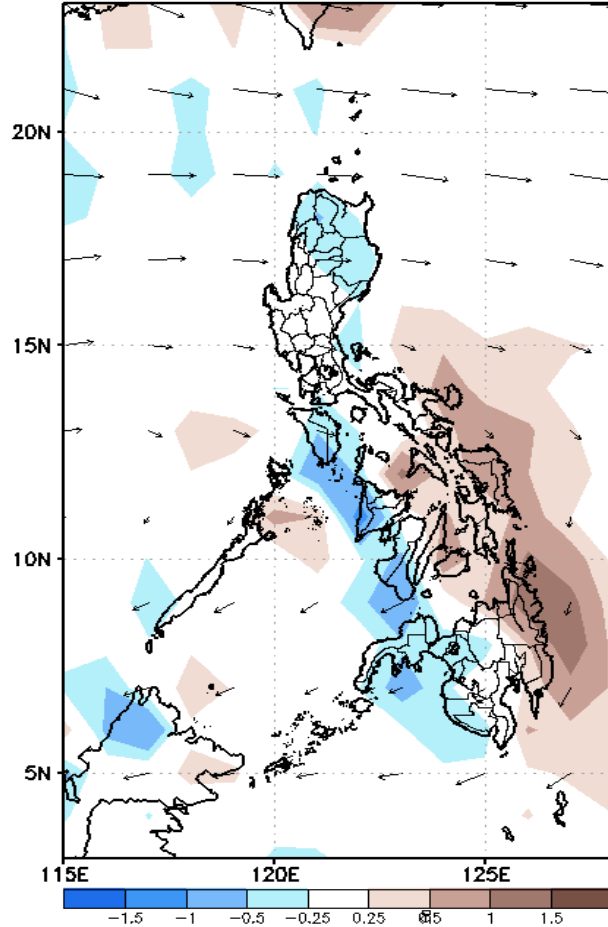
# Week 1 & Week 2 Forecast for the Philippines using GEFS Model



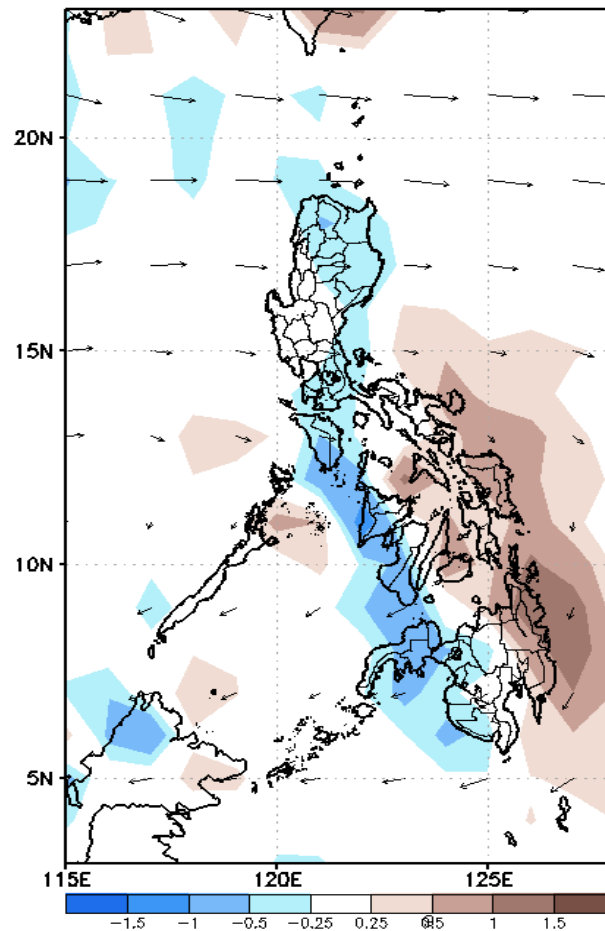
# GEFS Week-1 Forecasts: Divergence & Wind Anomaly

**Week 1: Jan 28 – Feb 3, 2021**

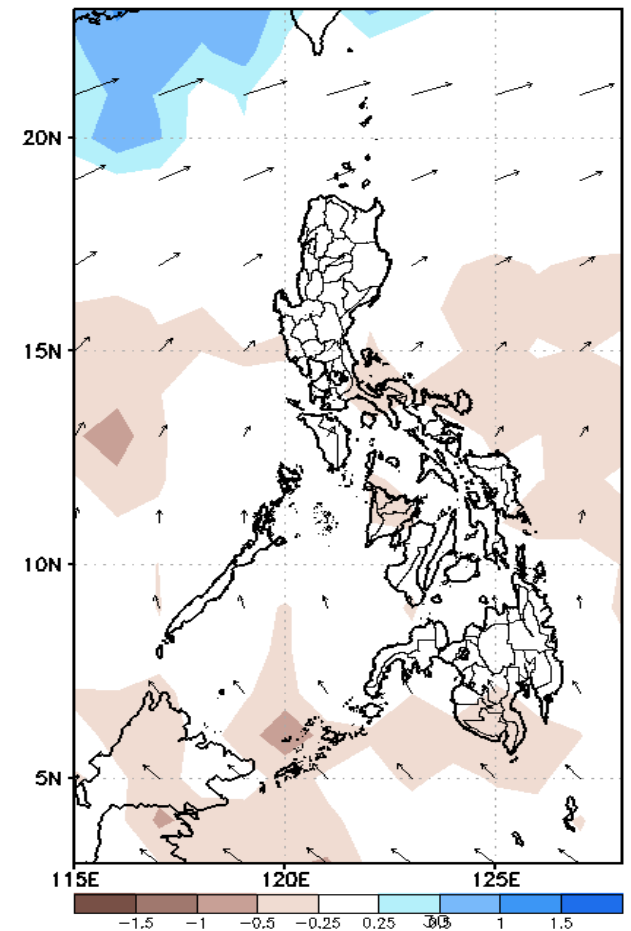
GEFS Week-1 850-hPa Divergence and Wind Anom  
Valid: 20210128 – 20210203



GEFS Week-1 700-hPa Divergence and Wind Anom  
Valid: 20210128 – 20210203



GEFS Week-1 200-hPa Divergence and Wind Anom  
Valid: 20210128 – 20210203

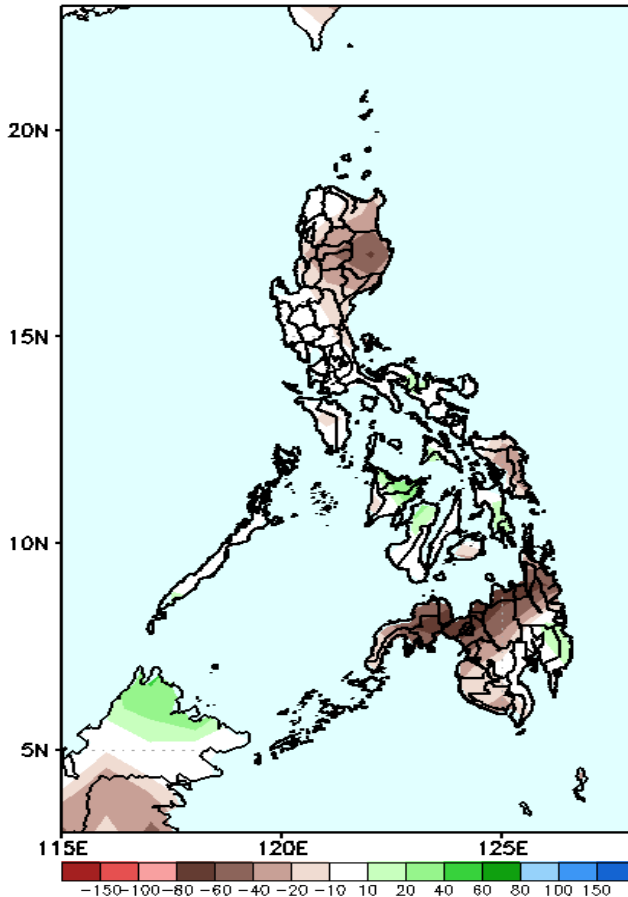


Upper and low level Divergence suggest likelihood of precipitation in most parts of the country except La Union, Pangasinan and most parts of Southern Luzon. Northeast Monsoon affecting most parts of the country during the forecast period.

# Precipitation Anomaly and Exceedance Probability > 25/50 mm

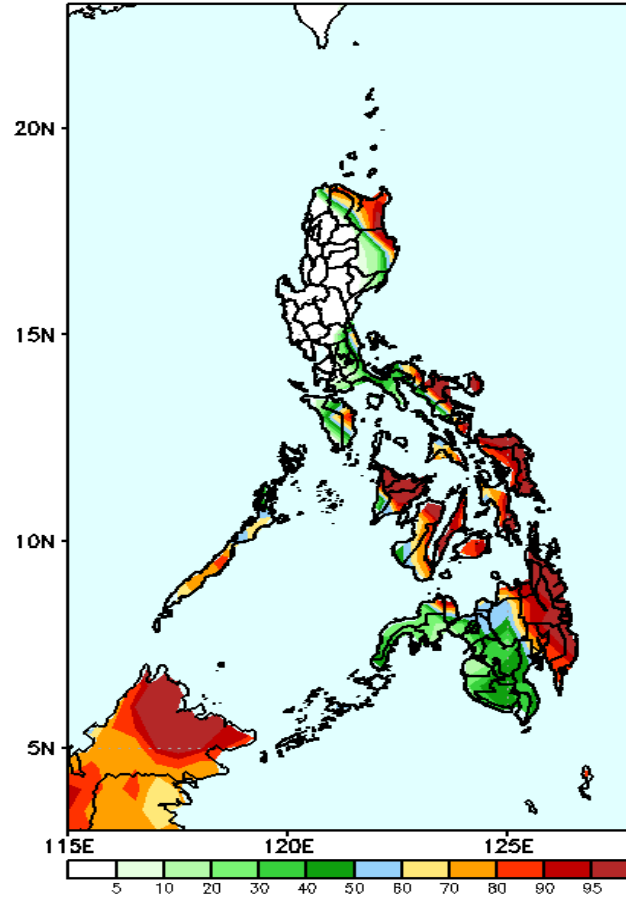
Week 1: Jan 28 – Feb 3, 2021

GEFS Week-1 Precip Anomaly  
Valid: 20210128 – 20210203



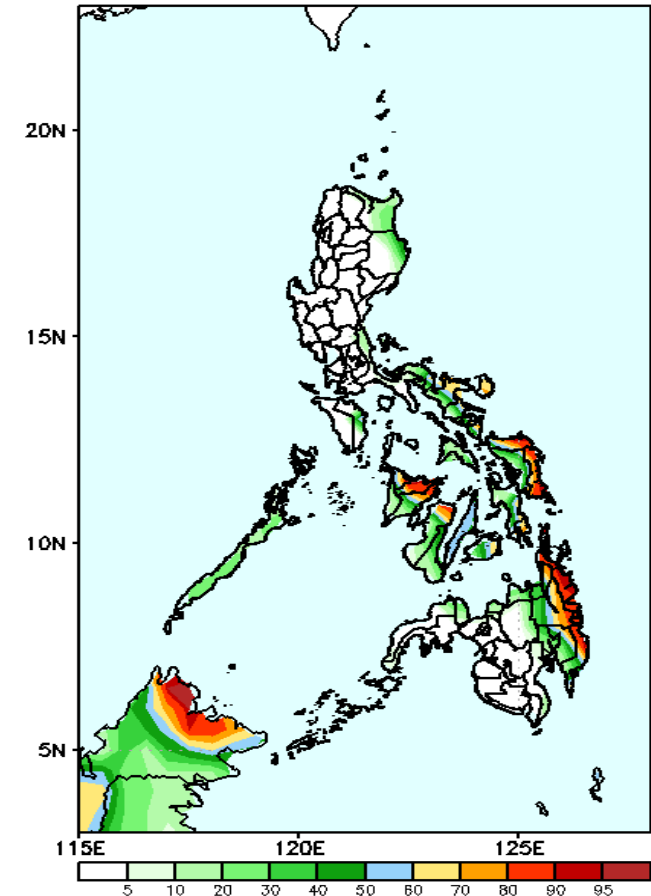
Rainfall deficit of up to 80mm is expected in most parts of Cagayan Valley and Cordillera Region, in Samar provinces and in most parts of Mindanao.

GEFS Week-1 Exceedance Prob. > 25mm  
Valid: 20210128 – 20210203



High probability of rainfall to exceed 25mm in Apayao, Cagayan, northern Isabela, Bicol Region, most parts of Visayas and eastern half of Mindanao during the forecast period.

GEFS Week-1 Exceedance Prob. > 50mm  
Valid: 20210128 – 20210203

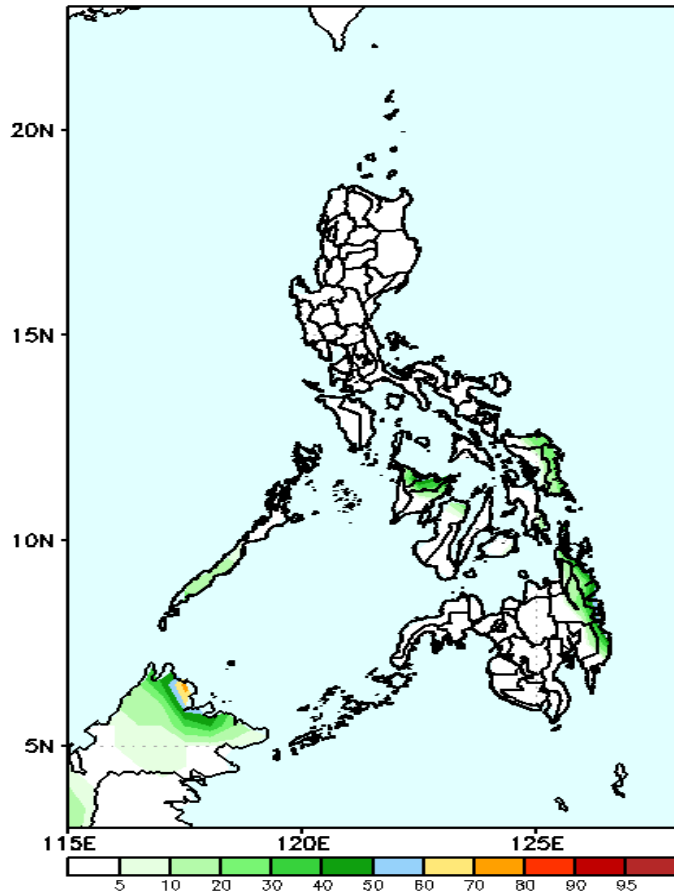


High probability of rainfall to exceed 50mm in Northern & Eastern Visayas, eastern parts of Panay Island and eastern parts of Mindanao while less likely for the rest of the country during the forecast period.

# Exceedance Probability > 100/150/200 mm

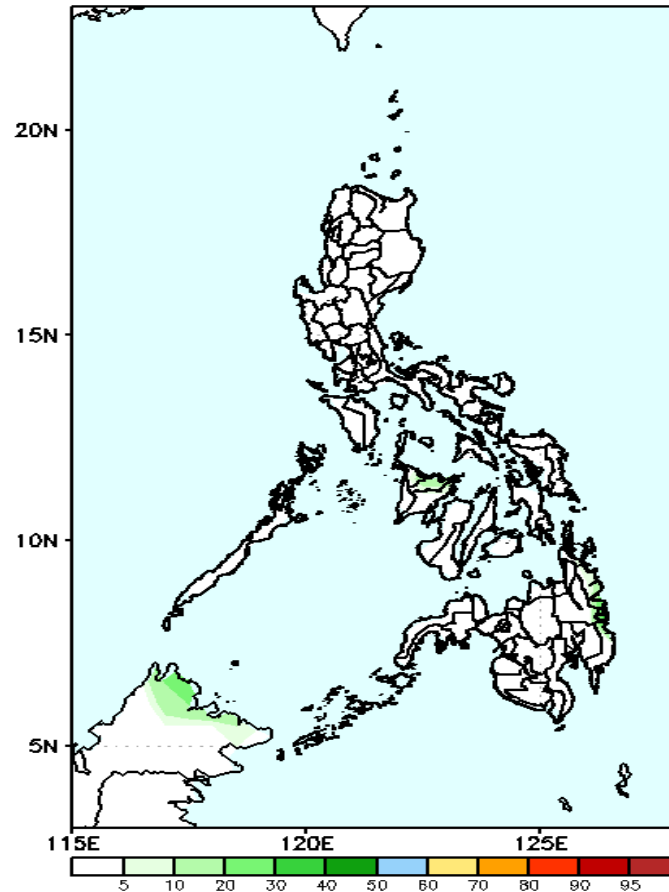
Week 1: Jan 28 – Feb 3, 2021

GEFS Week-1 Exceedance Prob. > 100mm  
Valid: 20210128 – 20210203



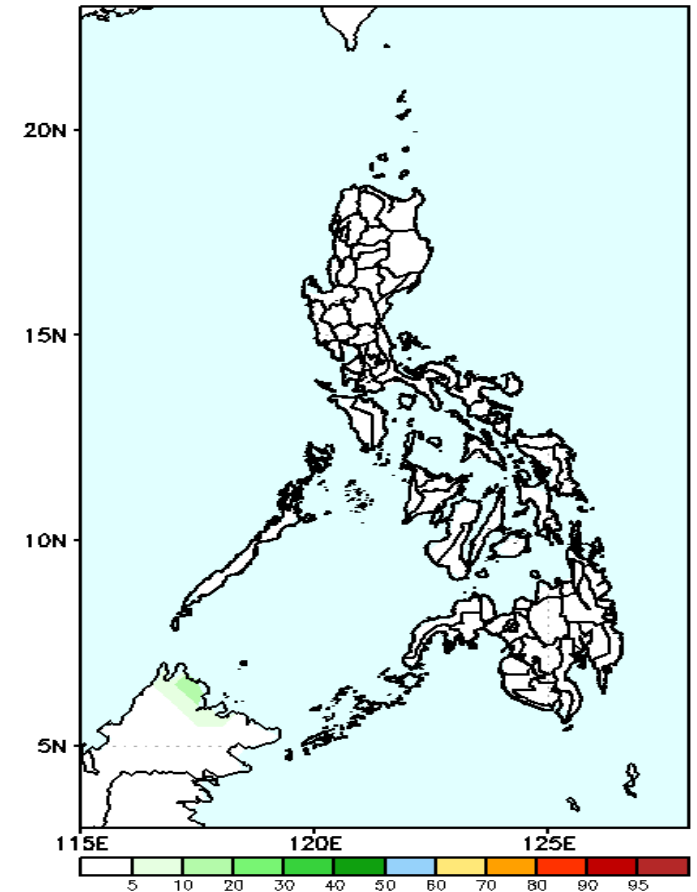
Less probability of rainfall to exceed 100mm in most parts of the country during the forecast period.

GEFS Week-1 Exceedance Prob. > 150mm  
Valid: 20210128 – 20210203



Less probability of rainfall to exceed 150mm in most parts of the country during the forecast period.

GEFS Week-1 Exceedance Prob. > 200mm  
Valid: 20210128 – 20210203



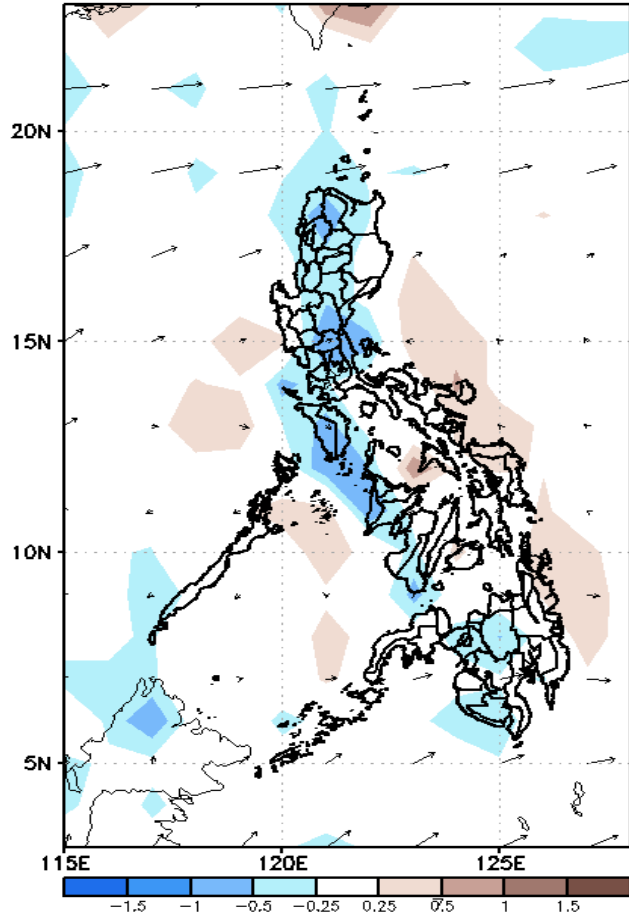
Less probability of rainfall to exceed 200mm in most parts of the country during the forecast period.



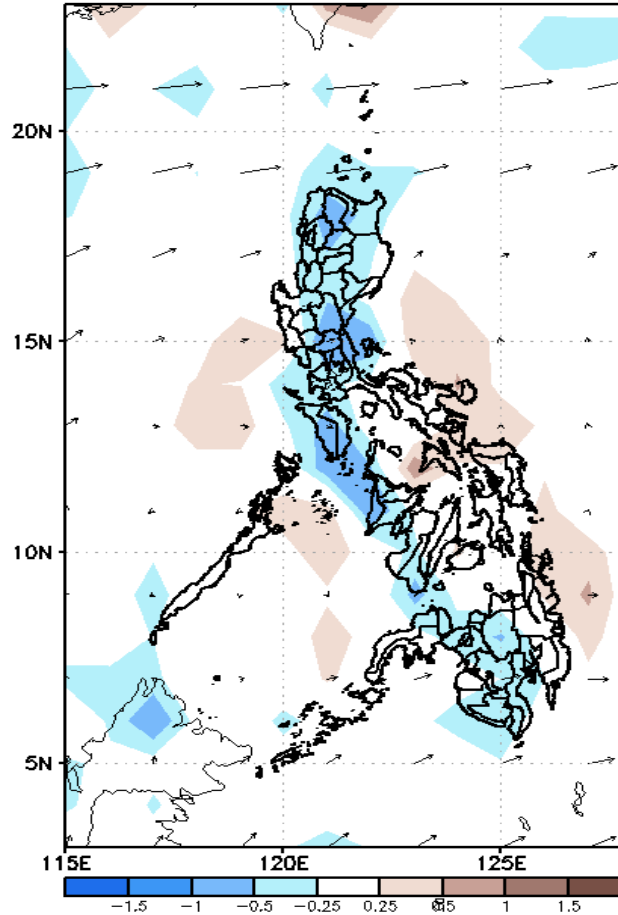
# GEFS Week-2 Forecasts: Divergence & Wind Anomaly

## Week 2: February 4-10, 2021

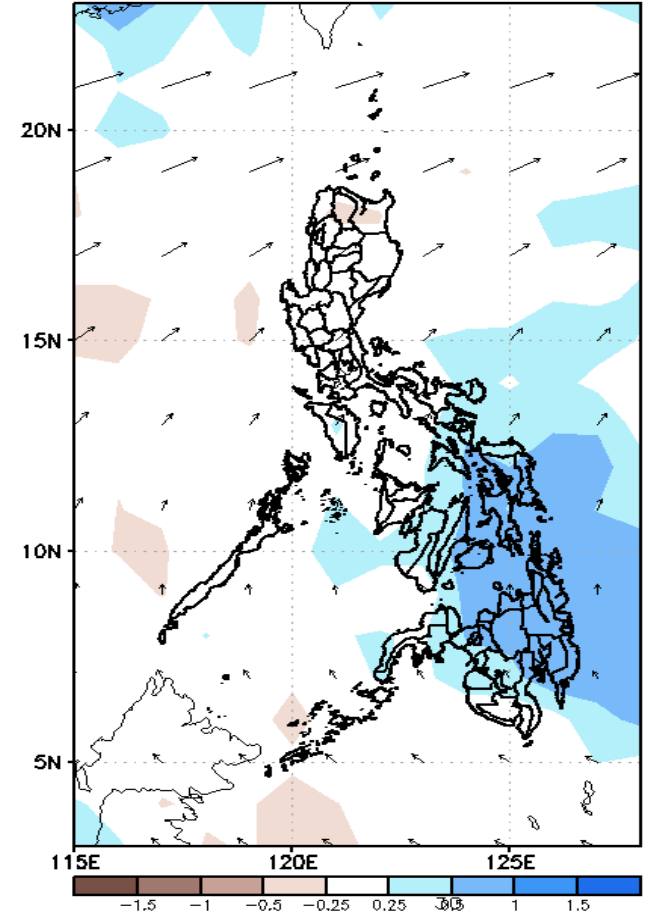
GEFS Week-2 850-hPa Divergence and Wind Anom.  
Valid: 20210204 - 20210210



GEFS Week-2 700-hPa Divergence and Wind Anom.  
Valid: 20210204 - 20210210



GEFS week-2 200-hPa Divergence and Wind Anom.  
Valid: 20210204 - 20210210

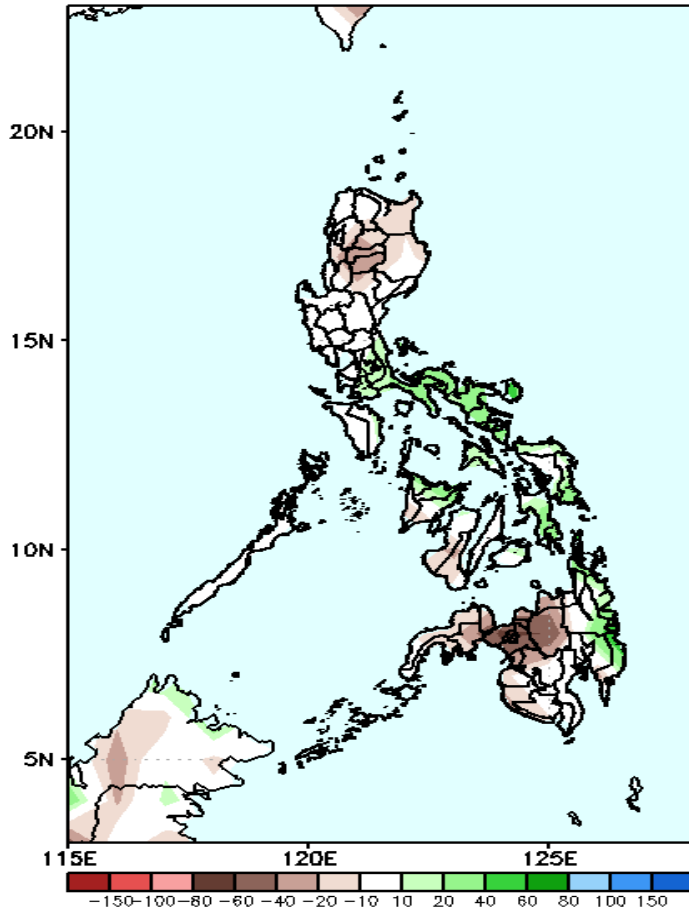


Upper and low level Divergence suggest likelihood of precipitation in most parts of the country. Northeast Monsoon affecting Northern and Extreme Northern Luzon while Easterlies affecting most parts of the country during the forecast period.

# Precipitation Anomaly and Exceedance Probability > 25/50 mm

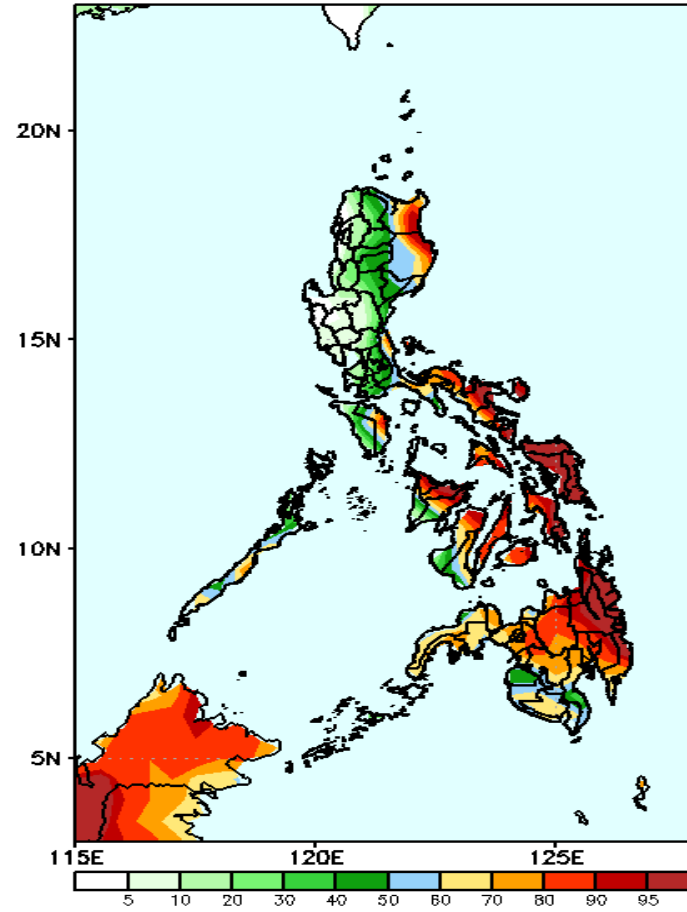
## Week 2: February 4-10, 2021

GEFS Week-2 Precip Anomaly  
Valid: 20210204 - 20210210



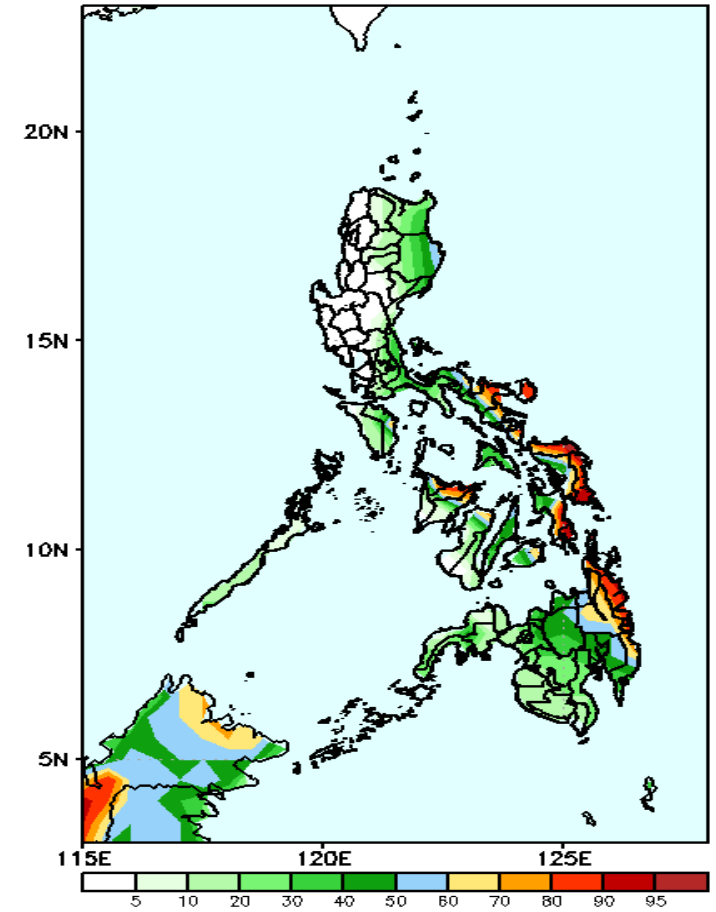
Rainfall deficit of up to 80mm in northern Mindanao and 20-40mm in Cordillera Region while increase of rainfall of up to 60mm in Southern Luzon and eastern Visayas & Mindanao during the forecast period.

GEFS Week-2 Exceedance Prob. > 25mm  
Valid: 20210204 - 20210210



High probability of rainfall to exceed 25mm in Cagayan, northern Isabela, CALABARZON, Bicol Region, most parts of Visayas and Mindanao during the forecast period.

GEFS Week-2 Exceedance Prob. > 50mm  
Valid: 20210204 - 20210210

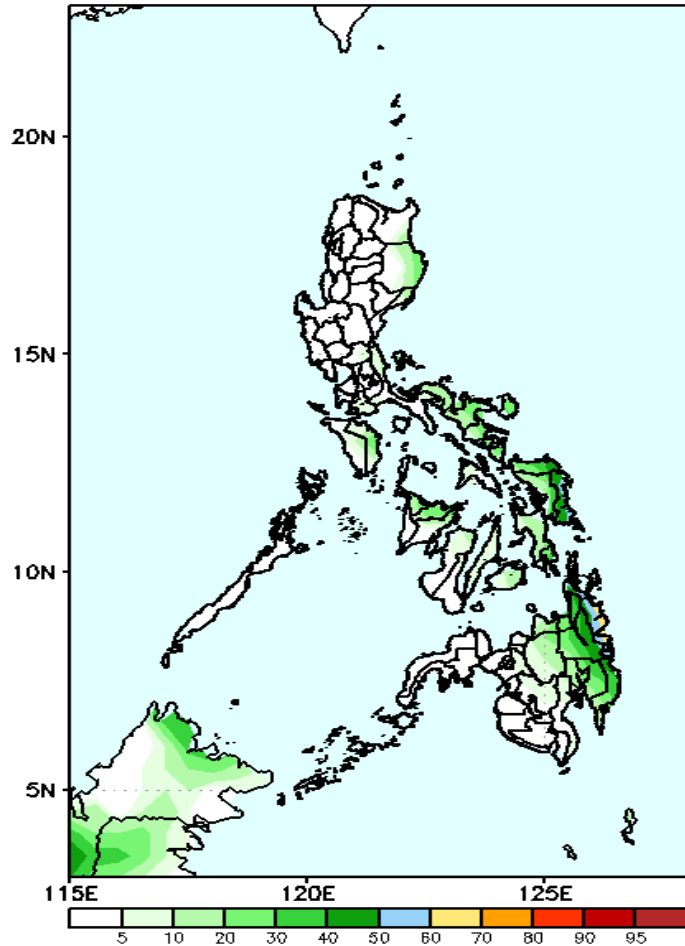


High probability of rainfall to exceed 50mm in Camarines Sur, Catanduanes, Eastern Visayas, Capiz, Leyte, and CARAGA Region while less likely for the rest of the country during the forecast period.

# Exceedance Probability > 100/150/200 mm

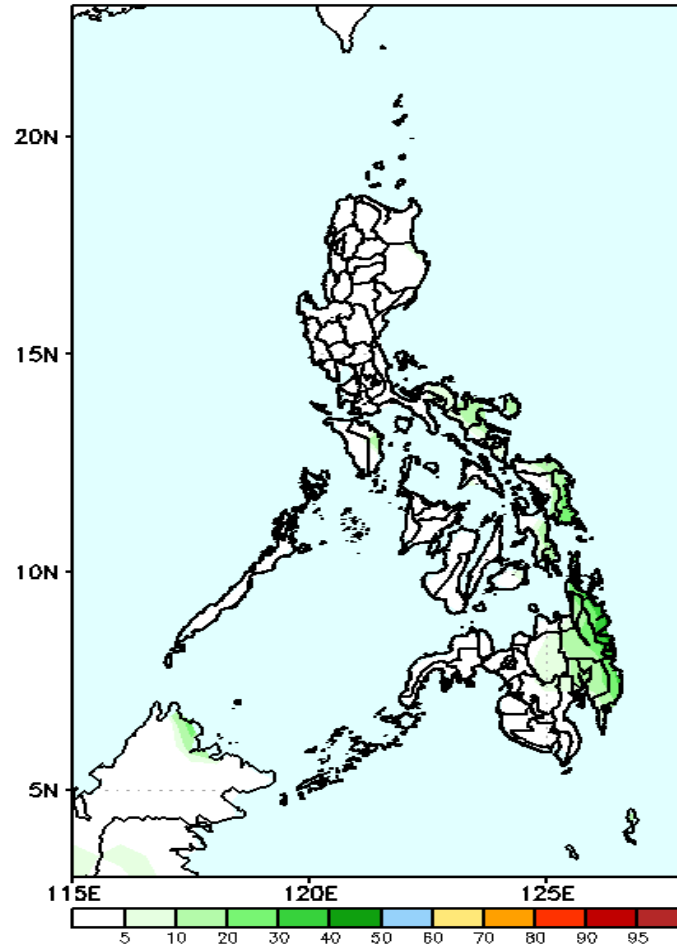
## Week 2: February 4-10, 2021

GEFS Week-2 Exceedance Prob. > 100mm  
Valid: 20210204 - 20210210



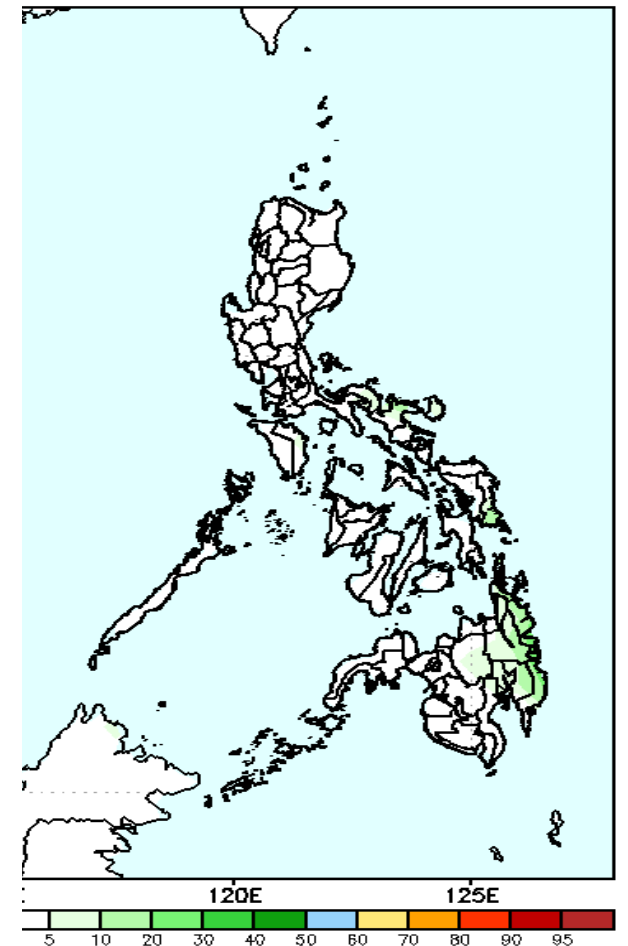
Less probability of rainfall to exceed 100mm in most parts of the country during the forecast period.

GEFS Week-2 Exceedance Prob. > 150mm  
Valid: 20210204 - 20210210



Less probability of rainfall to exceed 150mm in most parts of the country during the forecast period.

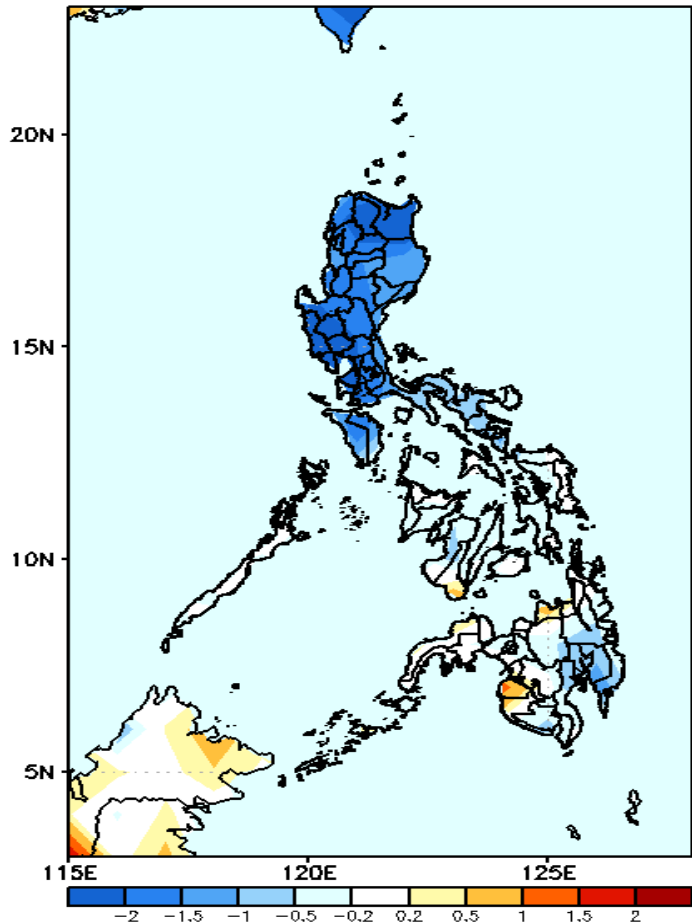
Week-2 Exceedance Prob. > 200mm  
Valid: 20210204 - 20210210



Less probability of rainfall to exceed 200mm in most parts of the country during the forecast period.

# GEFS Week-1 & 2 Forecasts: T2m Anomaly

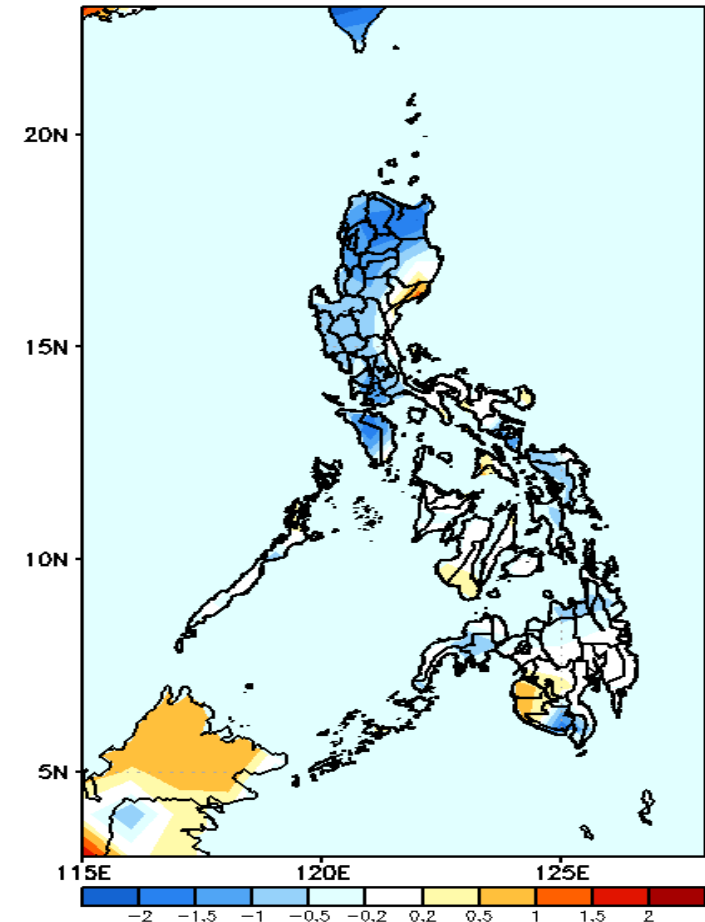
GEFS Week-1 T2m Anomaly  
Valid: 20210128 - 20210203



## 2m Temperature Week 1: Jan 28 – Feb 3, 2021

Cooler than average surface air temperature is expected in most parts of Luzon while average to slightly cooler than average surface air temperature in Visayas and Mindanao.

GEFS Week-2 T2m Anomaly  
Valid: 20210204 - 20210210



## 2m Temperature Week 2: February 4-10, 2021

Cooler than average surface air temperature is expected in most parts of Luzon except in Isabela while average to slightly cooler than average surface air temperature in Visayas and Mindanao.

